

# DiskSim Win

Windows program for file transfer between PC and UVS instruments.

## User's Manual

Ver 1.0.3 and later



# ABEM

Information in this document is subject to change without notice and constitutes no commitment by ABEM Instrument AB.

ABEM Instrument AB takes no responsibility for errors in the document or problems that may arise from the use of this material.

© Copyright ABEM Instrument AB. All rights reserved.

## ABEM Instrument AB

Hamngatan 27  
S-172 66 Sundbyberg  
Sweden

Phone: +46 8 764 60 60  
Fax: +46 8 28 11 09  
Homepage: <http://www.abem.se>  
E-mail: [sales@abem.se](mailto:sales@abem.se)  
[support@abem.se](mailto:support@abem.se)

Programmed by:  
Daniel Néri  
Signalteknik AB

## Introduction

The DiskSimWin program simulates and replaces the UVS 3600/3601 Disk Drive.

DiskSimWin enables the user to transfer recorded data from UVS instruments to a PC, and to download/upgrade instrument firmware and language files.

## System Requirements

- PC running Windows 95/98, or Windows NT 4.0 Service Pack 3 or later.
- Cable of type UVS modular.

DiskSimWin works with UVS 500, 600, 1500, 1504 and 1608.

## Installation

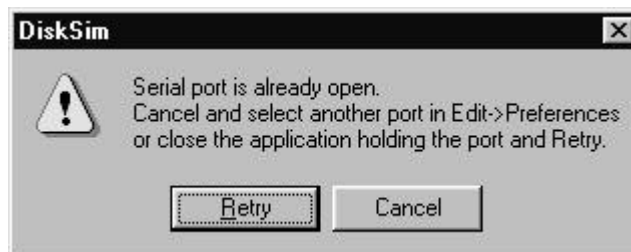
Run SETUP.EXE from installation disk no. 1, for example by choosing "Run..." in the Start menu, entering "A:\SETUP.EXE" and clicking OK; or by double clicking on SETUP.EXE in the Explorer. Then let the installation program guide you through the installation process.

The installation program installs an icon in the Start menu, which may be used to start DiskSimWin.

## Usage

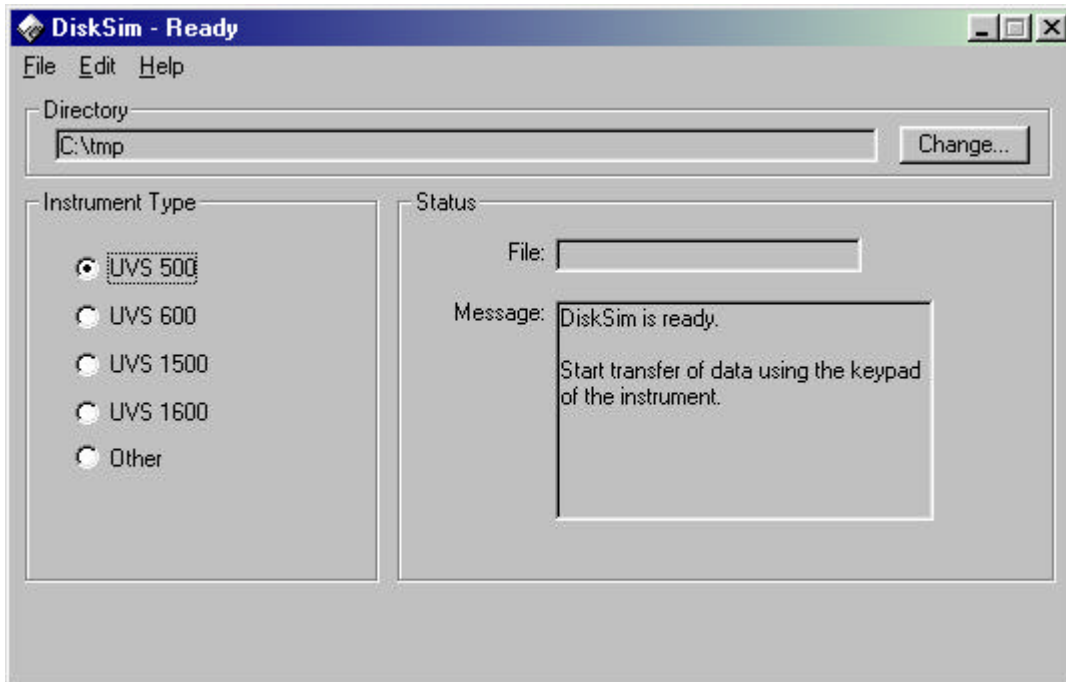
If you have never run DiskSimWin before, the program will assume the default settings: instrument type = UVS 500, serial port = COM1, directory = the Windows Desktop. Otherwise, the program will assume the settings from the last run.

If any of the settings cannot be done, (i.e. the serial is taken by another program, or by the mouse), an error message box will be shown (see figure.)



## **How to transfer instrument data files:**

- Connect the instrument to one of the computer's serial ports, using an UVS modular cable.
- Start DiskSimWin from the Start menu. This will bring you to the main window (see figure).

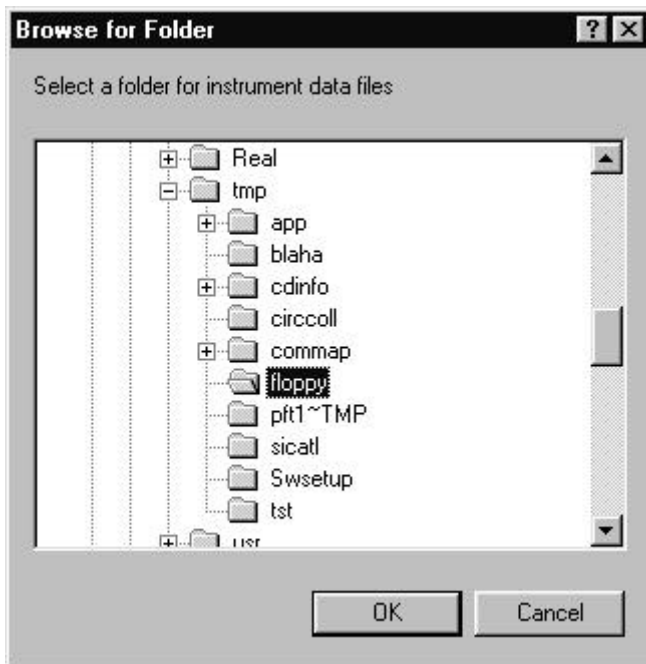


- Check that the serial port to which the instrument is connected is set up in the program preferences (pull-down menu: Edit→Preferences; see figure).



- Choose instrument type by clicking the corresponding radio button. If none of the radio buttons match your instrument, choose “Other” and the baudrate that apply to the instrument type.
- If necessary, change directory by clicking the “Change...” button (see figure).

***NB: When uploading a new program or language version to the instrument the directory must contain only the file to be uploaded.***



- Start transfer to/from the instrument **using the keyboard of the instrument** (see instrument manual).

A progress bar will show during the transfer. DiskSimWin (and the instrument) will eventually tell if the transfer was successful.

If nothing happens after the transfer has been initiated from the instrument, check the program settings once again (especially the serial port setup), and try again.

Quit the program by choosing File→Exit in the pull-down menu, or by clicking the “Close” button.

**Miscellaneous**

**WARNING:** Problems may appear with DiskSimWin in combination with network modem sharing software (for example LANSource WINport). These problems may result in data loss.

To avoid problems, deactivate/uninstall such software, and reboot the computer before using DiskSimWin.

Some old UVS 1608 instruments use a lower baudrate. If you are having problems with such an instrument, choose “Other” as instrument type, and then select the baudrate 9600 bps.