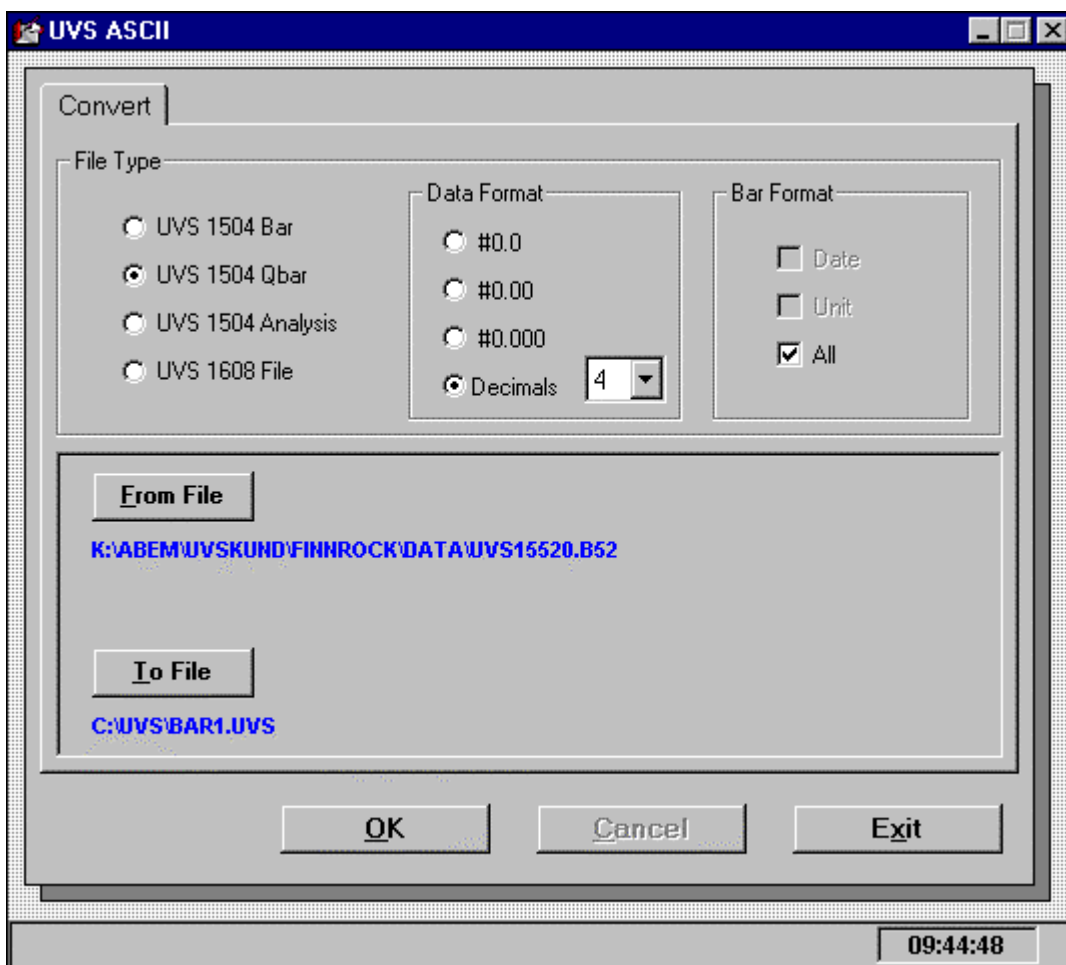


UVS ASCII

Program for conversion of UVS datafiles to ASCII format.

User's Manual

Ver 1.02 and later



ABEM

Information in this document is subject to change without notice and constitutes no commitment by ABEM Instrument AB.

ABEM Instrument AB takes no responsibility for errors in the document or problems that may arise from the use of this material.

© Copyright ABEM Instrument AB. All rights reserved.

ABEM Instrument AB
Hamngatan 27
S-172 66 Sundbyberg
Sweden

Phone: +46 8 764 60 60
Fax: +46 8 28 11 09
Homepage: <http://www.abem.se>
E-mail: sales@abem.se
support@abem.se

General information

UVS ASCII is a PC Windows program for conversion of datafiles from the UVS 1500, 1504 and 1608 instruments.

Data is converted to ASCII and is saved in a new file.

The ASCII format used for UVS 1500/1504 is column orientated and separated by tabs. The UVS 1608 data is separated by space.

You can run UVS ASCII under Windows 95 or Windows 3.1 or later.

Installation

UVS ASCII is distributed on two 3.5" diskettes.

Place diskett 1 in drive **a:**

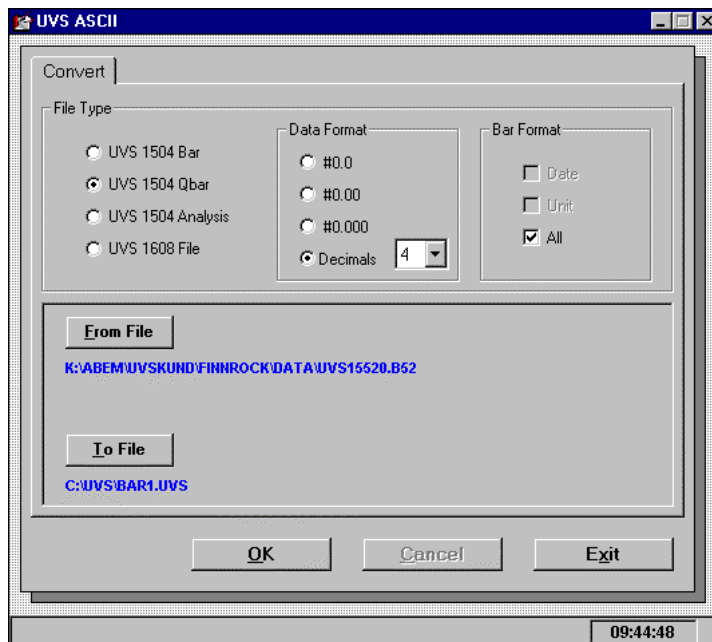
Select the **File**-menu in the program manager

Select **Run**

Write **a:\setup** + Enter and follow the advices of the installation software.

Data conversion

When the program is started this picture is shown:



You can select:

File Type

UVS 1500/1504 Bar, 2-minutes Bar/Table data (filename UVS15SSS.BNN)

UVS 1500/1504 Qbar, 2-seconds stripchart data (UVS15SSS.QNN)

UVS 1500/1504 Analysis data (UVS15SSS.EEE)

UVS 1608 Analysis data (UVS16SSS.EEE)

(SSS is instrument serial number)

(EEE is event number)

Data format makes it possible to select the number of decimals in the ASCII file.

Normally we recommend you to select 1 or 2 decimals.

Bar Format is normally set to all. If not, only date and/or unit can be included (besides the vibration data).

With **From File** you select the file to be converted.

The **To File** is used to select a destination file. Normally a new file is generated.

Push **OK** to start data conversion.

On the following pages examples of ASCII-files (imported to EXCEL) are shown.

1.70	0.55	0.75	0.20
1.35	1.10	0.55	0.20
0.15	0.30	0.40	0.20
0.50	1.15	1.95	0.20
0.55	1.00	1.65	0.20
0.60	1.30	3.05	0.20
0.45	0.60	0.95	0.20
1.55	0.95	1.90	0.20
9.55	1.30	1.45	0.20
0.50	0.45	0.70	0.20
0.20	0.55	0.70	0.20
0.25	0.50	0.70	0.20
0.35	0.55	0.80	0.20
2.00	0.65	1.05	0.25
2.35	0.80	1.15	0.20
0.90	0.45	0.90	0.20
1.05	0.70	0.70	0.20
1.55	0.35	0.90	0.20
2.35	0.95	0.80	0.20
1.15	0.40	0.25	0.20
1.20	0.80	0.60	0.20
2.80	0.60	0.75	0.20
1.45	0.40	0.65	0.20
1.40	0.45	0.35	0.20
0.90	0.35	0.50	0.25
1.75	0.55	0.75	0.20
2.15	1.05	0.50	0.20
1.00	0.45	0.70	0.20
1.75	0.85	0.75	0.25
1.00	0.65	1.40	0.20
1.80	0.75	1.60	0.20
0.70	1.00	3.20	0.25
1.50	0.75	1.30	0.25
0.75	0.90	2.20	0.25
0.85	0.60	1.00	0.20
3.25	1.15	1.50	0.20
2.80	0.65	0.95	0.20
1.45	1.00	0.90	0.20
1.55	0.55	0.90	0.20
0.40	0.45	0.85	0.20

1997-12-16	16:00	315Hz	LO	mm/s	315Hz	LO	mm/s
OFF	315Hz	LO	mm/s				