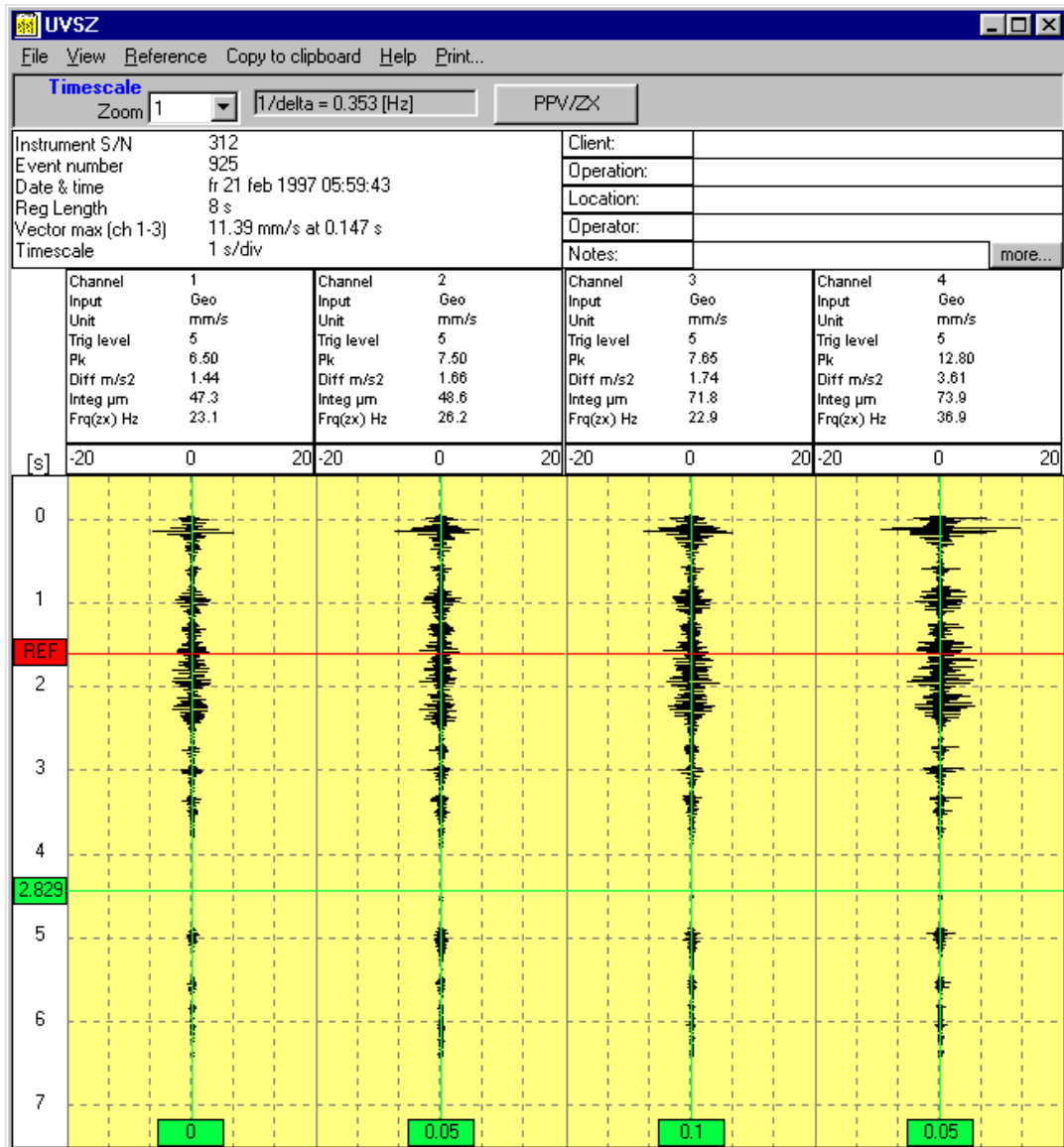


UVSZ

Windows program for presentation and printing of Analysis files from UVS 1500/1504 and UVS 1608.

User's Manual

Ver 2.8.9 and later



ABEM

Information in this document is subject to change without notice and constitutes no commitment by ABEM Instrument AB.

ABEM Instrument AB takes no responsibility for errors in the document or problems that may arise from the use of this material.

© Copyright ABEM Instrument AB. All rights reserved.

ABEM Instrument AB

Hamngatan 27

S-172 66 Sundbyberg

Sweden

Phone: +46 8 764 60 60

Fax: +46 8 28 11 09

Homepage: www.abem.se

E-mail: sales@abem.se

support@abem.se

General

UVSZ is a PC Windows-program for:

- o Presentation of Analysis data from the UVS 1500/1504 and the UVS 1608
- o Zooming, scaling & time measurement
- o Printing of selected presentation in color or black and white.

The program can be run under Windows 95/98, Windows NT4 with Service Pack 3 and later or Windows 2000.

Installation

UVSZ is delivered on CD-ROM:

- Place the CD in your computer
- Go to Explorer and double-click on the file *install.htm*
- Follow the instructions on the screen.

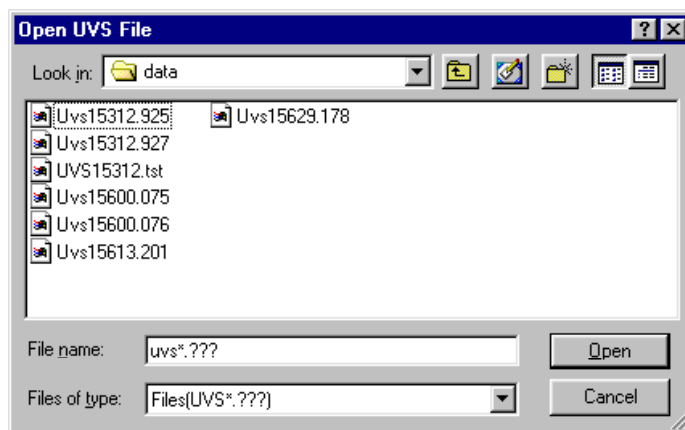
The program can also be downloaded from www.abem.com (please contact ABEM for password). Instructions for installation will also be provided.

Starting the program

Start the program by selecting the **UVSZ** shortcut from the UVS group under programs in the Windows Start menu.

Reading data

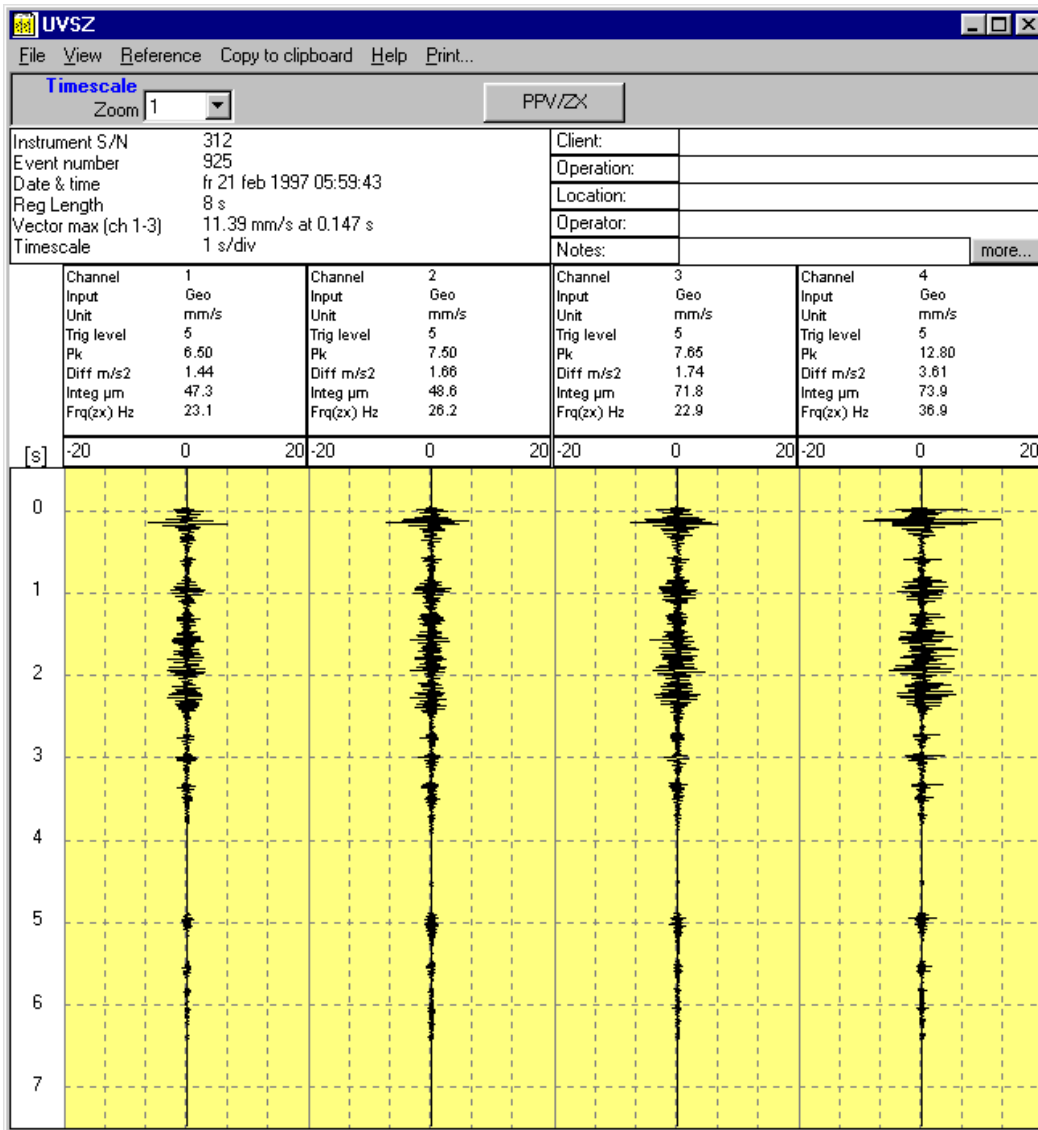
When the program has been started, a data file can be opened as usual by choosing *File...Open* on the menu line.



In the Open-dialog only files starting with UVS, located in the present “Look in”-selection, are shown. Choose one of these and click Open. The file is now read and drawn on screen.

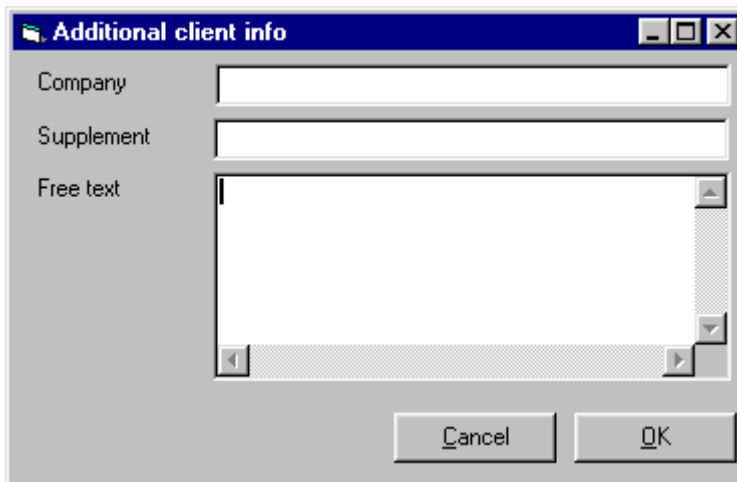
Presentation of data

The size of the window used for presentation can be varied by dragging the border of the window.



The fields pertaining to **Client**, **Project**, **Location**, **Operator** and **Notes** can be entered for each event.

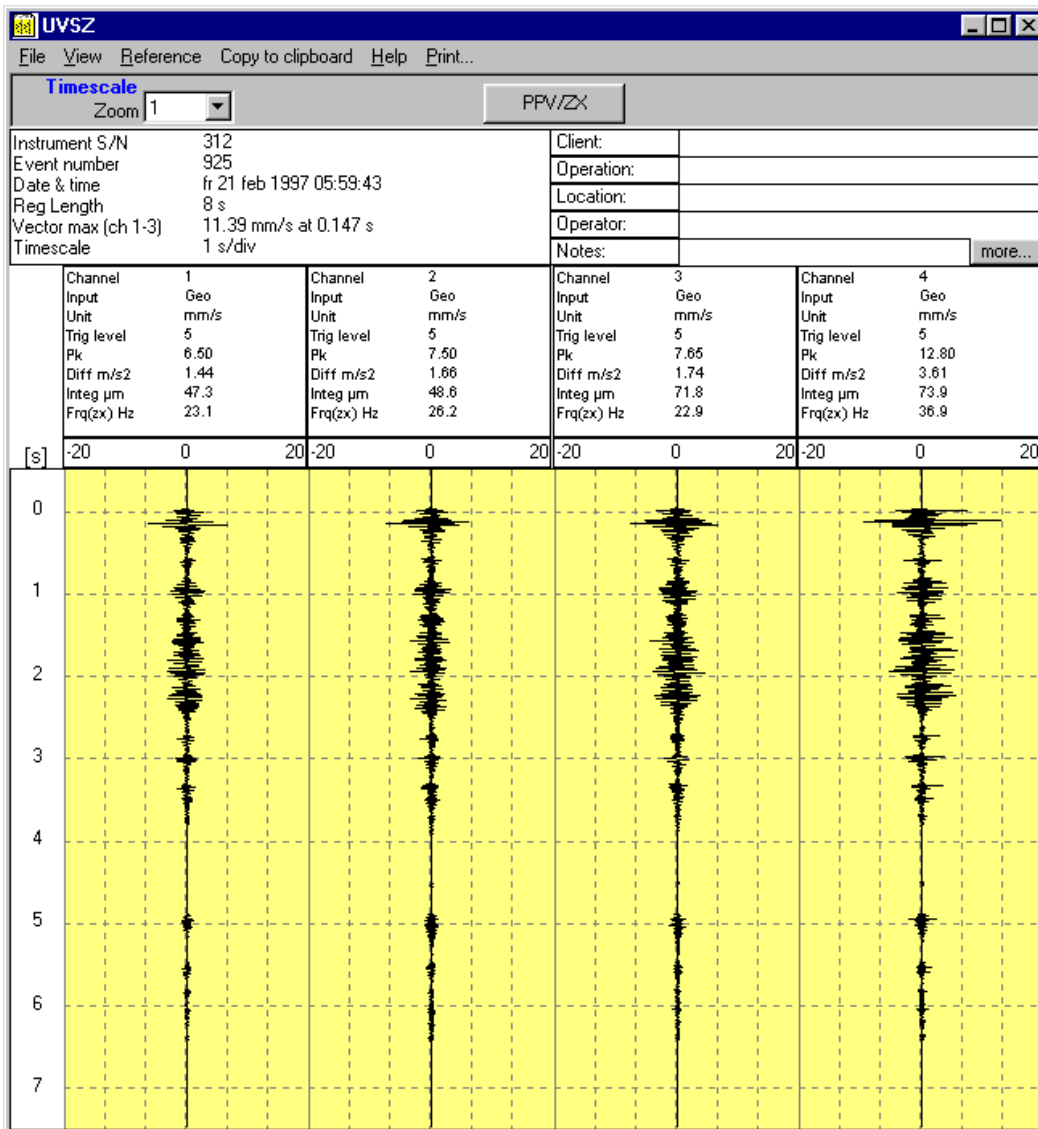
By clicking the **More...** button, additional text for **Company**, **Supplement** and **Free text** can be added. These texts will be included on your printouts.



The image shows a dialog box titled "Additional client info". It has a blue title bar with a folder icon on the left and standard window controls (minimize, maximize, close) on the right. The main area contains three input fields: "Company" (a single-line text box), "Supplement" (a single-line text box), and "Free text" (a multi-line text area with vertical and horizontal scrollbars). At the bottom of the dialog, there are two buttons: "Cancel" and "OK".

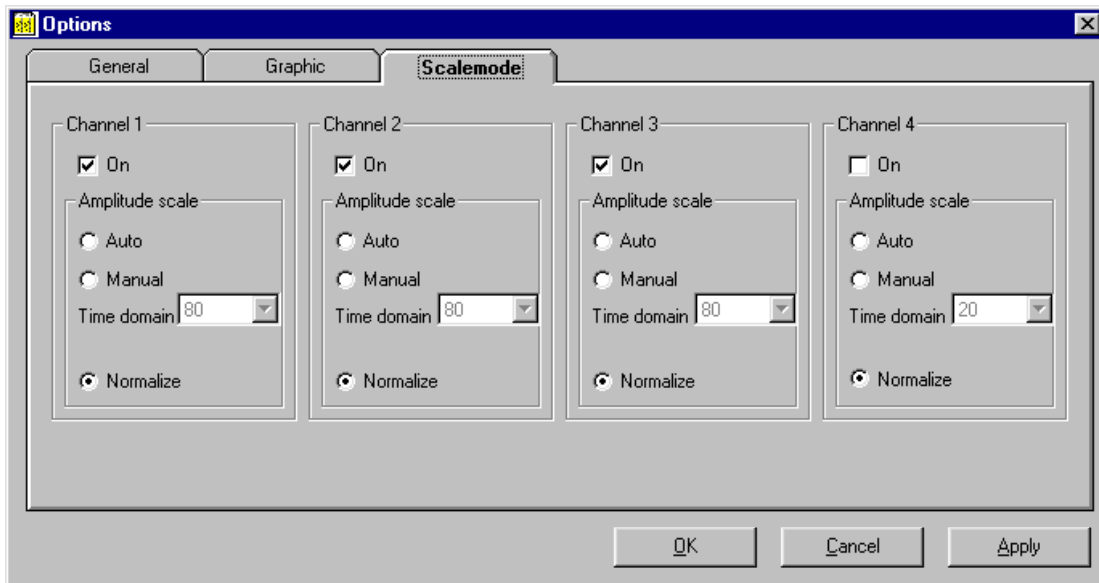
If the presently open event contains any text as above, and you open a new event which has no text in the “Client...to ...Notes” fields or in the “More” fields, the program will ask you if you want the previous texts to be copied to the new event.

The **Timescale** can be selected with the **Zoom** control in the upper part of the window.



If a zoom factor other than 1 is chosen, a scrollbar will appear to the right of the window (not visible in the picture above as the zoom factor is 1). This can be used to move the window swiftly along the graph.

The Amplitude scale is selected in the menu under *View...Options...Scale mode*.

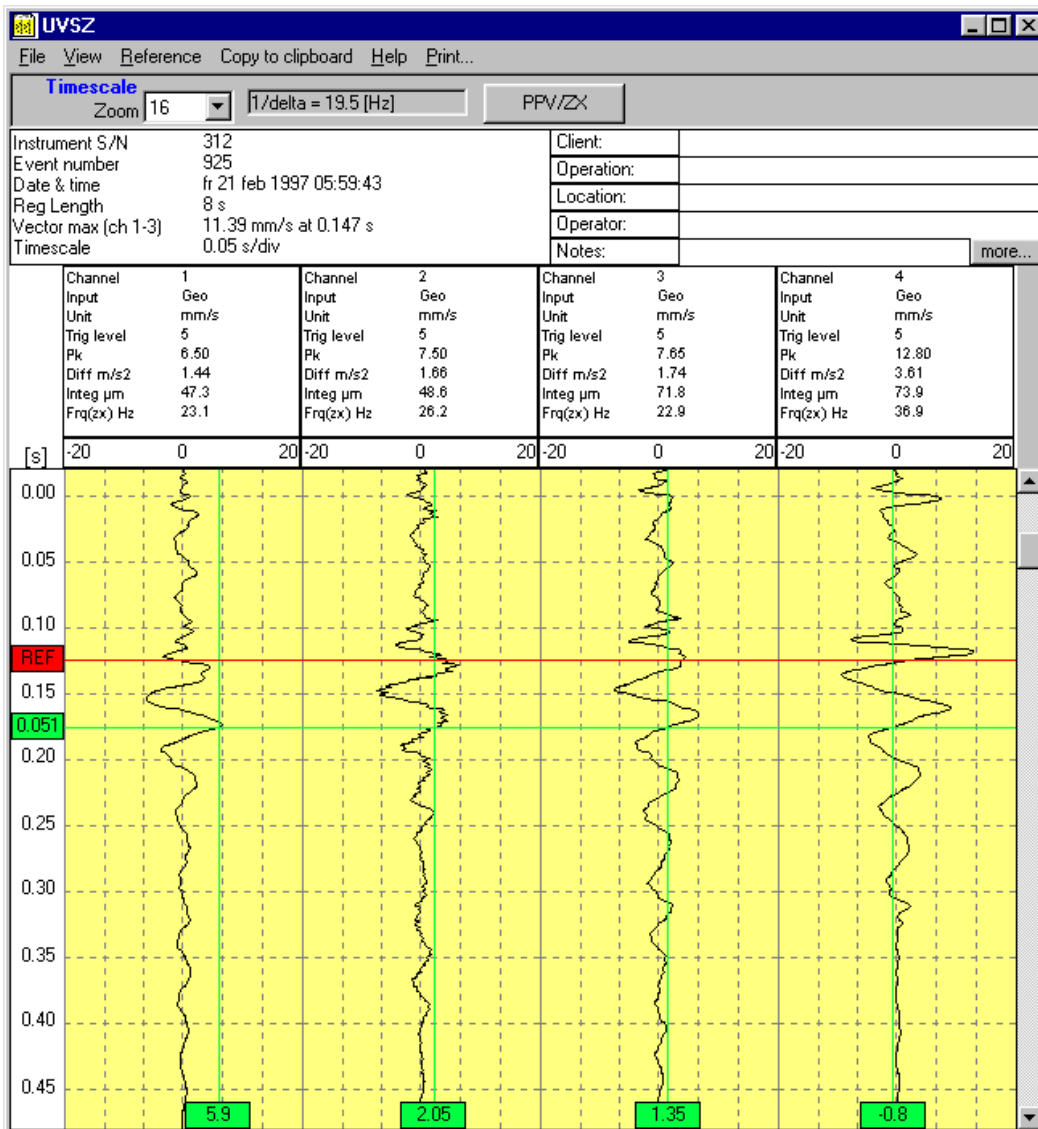


There are three different ways of scaling the channels:

- **Auto** scales each channel automatically to the largest size with a factor from a table.
- **Manual** implies that the factor is chosen from the list box.
- **Normalize** makes all channels with this choice and representing the same unit to have the same scale.

In this menu also presentation of individual channels can be turned off.

A cursor can be turned on or off in the *View...Cursor* menu.



In the boxes at the bottom of the window, the cursor values (amplitudes) of each channel are shown, whereas the cursor time is presented in a box on the left side.

The cursor can also be activated by pressing the left mouse button with the mouse cursor in the graph.

A Reference cursor is available in the *Reference* menu.

Alternatively the right mouse button can be used to show a menu where references can be added or removed.

The equivalent functions can also be activated by pressing *INS* on the keyboard, or removed by pressing *DEL*.

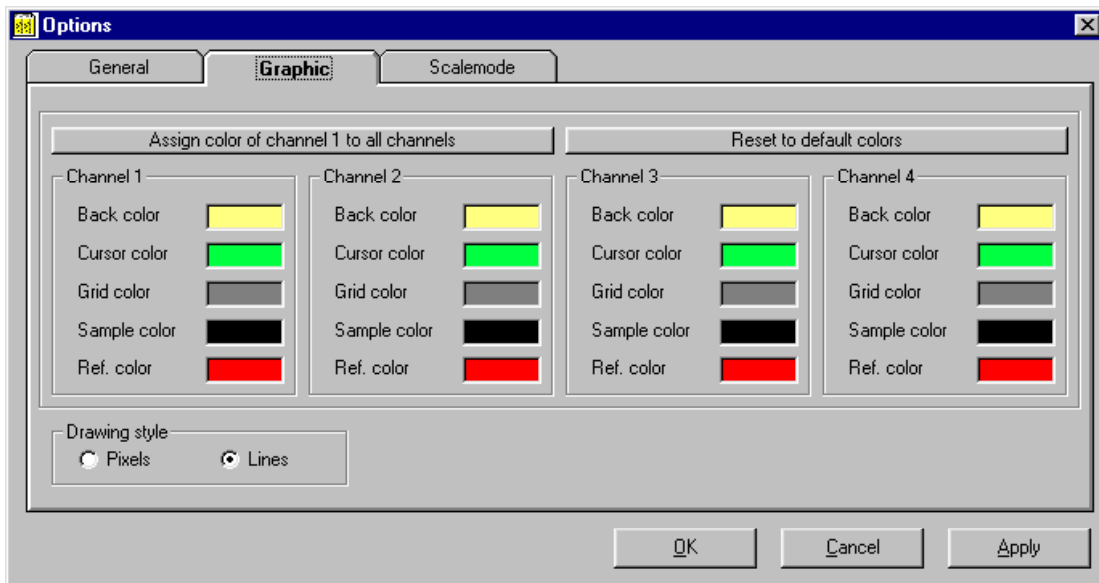
When the reference cursor is enabled a reference line with a “REF” box is shown. The cursor time is now related to the time of the reference line. The amplitude presentation at the bottom remains the same.

On the toolbar at the top of the window the value of $1/\Delta$ is presented in Hz. The delta value is the time difference between the reference line and the cursor.

This is of use if you measure the time for a complete sinus-like period, since you can read the frequency directly.

Graphical options

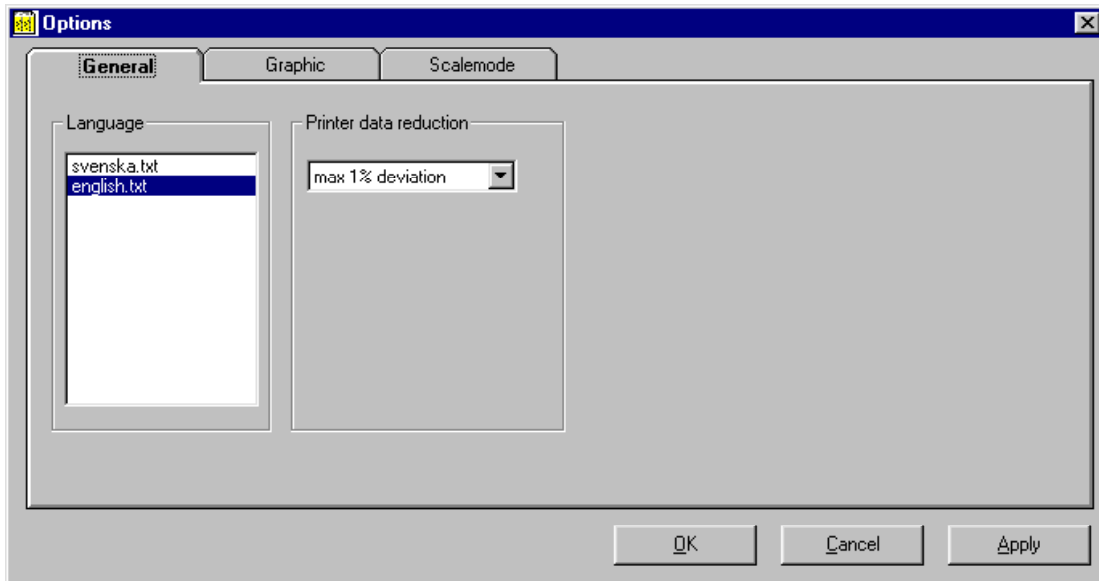
In the menu *View...Options...Graphic* you can choose background color, graph color and colors of the reference lines by clicking on the option you want to change, and follow the instructions on the screen.



It is also possible to choose pixel presentation instead of line presentation. This will enable you to see every single sample of the graph. Line presentation is normally recommendable, but pixel presentation is sometimes useful when you want to see the sample density of the graph.

General options

In the menu *View...Options...General* there are possibilities to change the language used and the data reduction settings for printouts.



Each available language is represented by a .txt file in the *language* subdirectory in the directory where UVSZ was installed. A new language can easily be added by opening one of the .txt files in Windows Notepad, translating the text and saving the file under a new name.

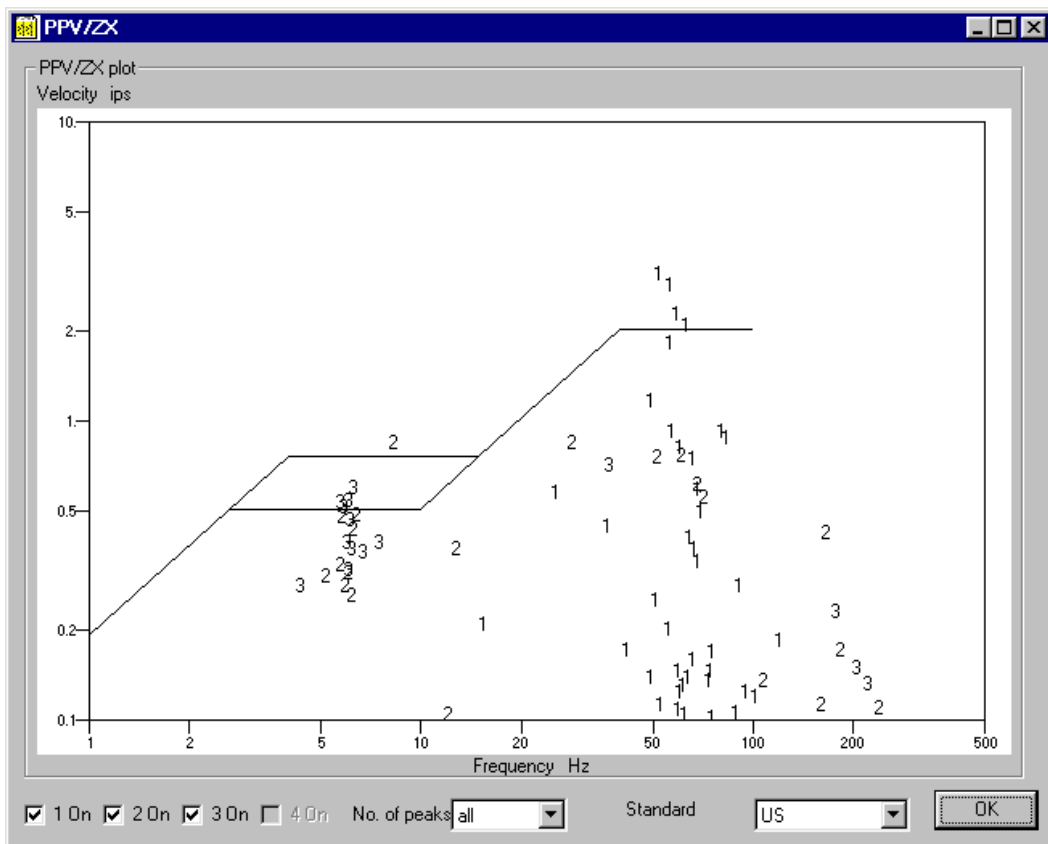
When printing large data files, in particular UVS 1608 measurement data, a lot of memory is required. This means that the printing can be slow if all measured samples are included.

It is therefore possible to exclude samples which have little influence on the printout quality.

In the dialog box *Printer data reduction* you can choose a suitable resolution. *Max deviation* provides the maximum permissible difference between the printed graph and the measured values, in % of the maximum amplitude of each channel.

PPV/ZX

Click the **PPV/ZX** button to view the PPV/ZX plot.



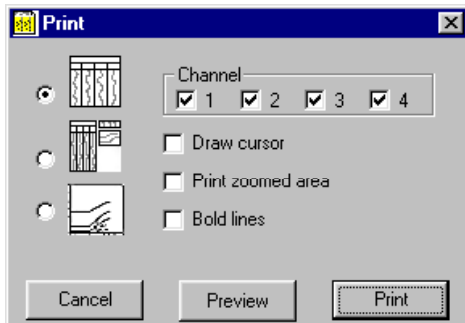
For activated channels (“On” selected on the bottom line) containing velocity data, you can view all or just the 16 highest peaks relative to a certain standard, e.g. USBM/OSM or DIN 4150 (also selected on the bottom line).

If the mouse cursor points at a certain peak in the graph, a box will pop up containing the amplitude and frequency of this peak.

To study the peaks of a certain channel, the other channels can be deactivated in the click-boxes on the bottom line.

Printing

The graphs currently displayed can be printed via the *File...Print* menu.



The printout alternatives include:

- Graphs and data only
- Graphs and data plus the PPV/ZX analysis and comments
- The PPV/ZX analysis only.

You can deselect channels you do not want on the printout, e.g. to give more space for a certain channel.

You can choose whether to

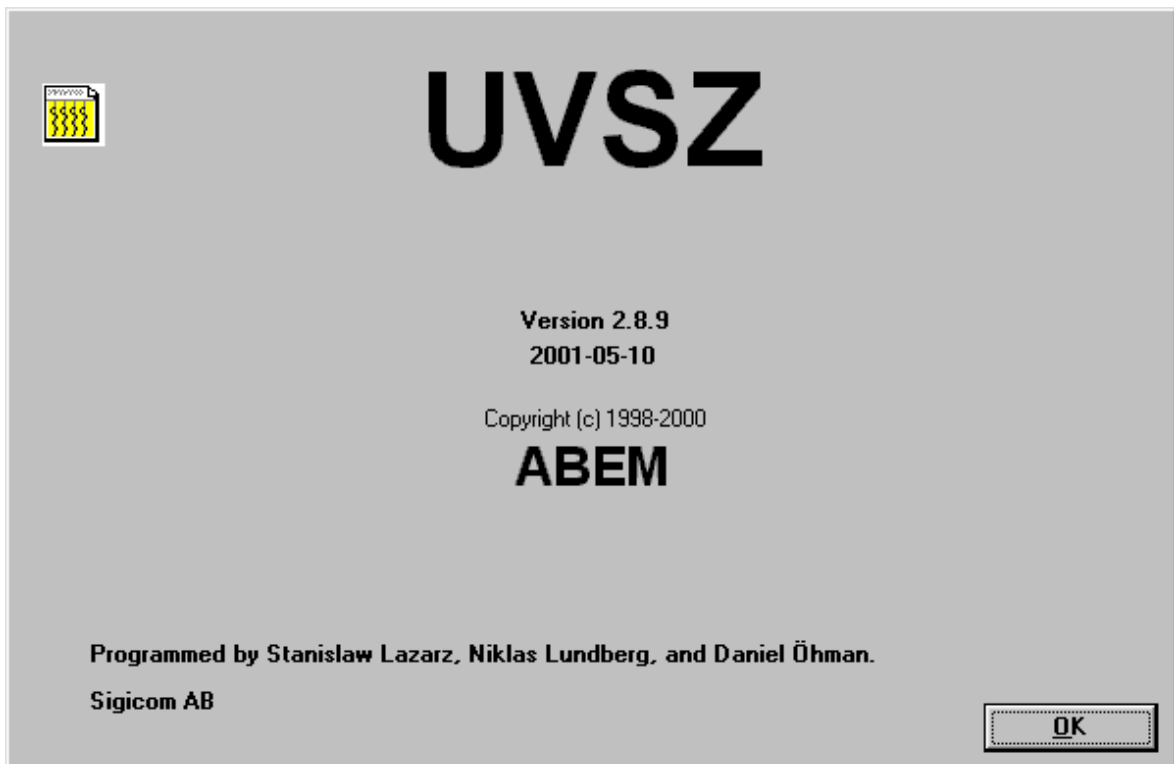
- include the cursors in the printout
- print the complete graph or only the zoomed portion
- use regular or bold lines.

There is also a possibility to preview the printout.

On the last page of this manual you will find a few printout examples.

The About box

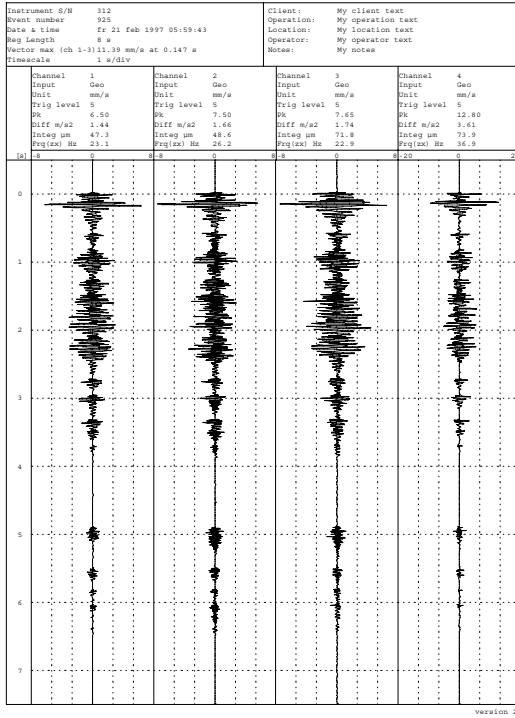
From the *Help...About...* menu you can reach the About UVSZ box.



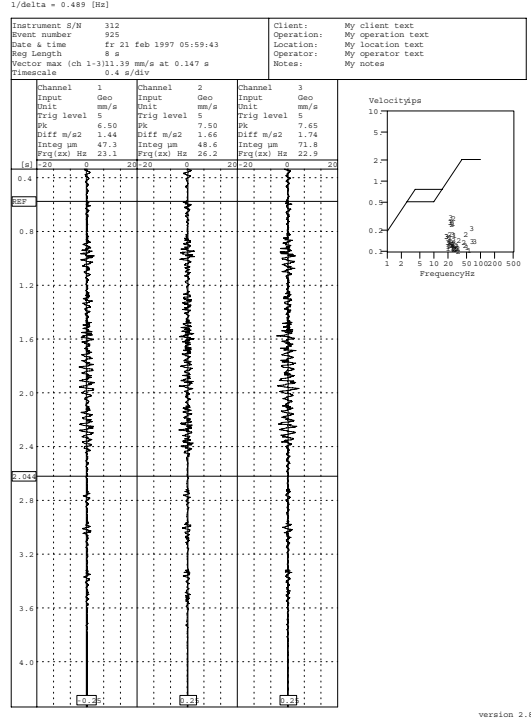
If a newer program version is available it can be downloaded from ABEM's web site www.abem.com (please contact ABEM for password). You are also welcome to e-mail observations and comments to support@abem.se.

Printout examples

My company text
My supplement text
My free text.



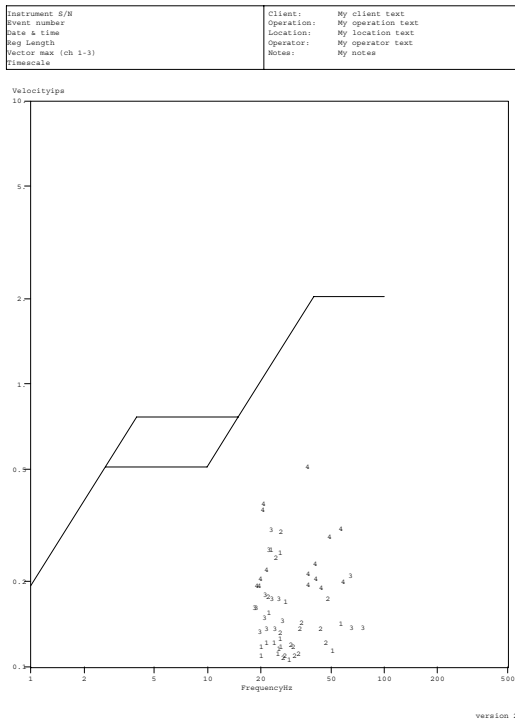
My company text
My supplement text
My free text.



Printout of graphs.

Printout of graphs and PPV/ZX analysis.

My company text
My supplement text
My free text.



Printout of PPV/ZX analysis.